



MANKO

WINDOW SYSTEMS INC.

www.mankowindows.com

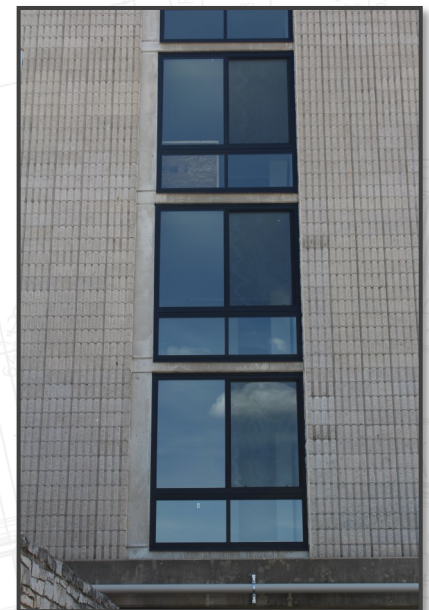
2135xpt

FIXED ■ SINGLE SLIDER



your local sales rep
(608) 825-4838

Traditionally, using a horizontal sliding window system meant that thermal performance was being sacrificed. So it was no surprise when the adoption of stricter commercial energy codes eliminated traditional horizontal sliders as an option in many climate zones. In response to this, a dramatically more thermally efficient horizontal sliding window system was needed. The innovative Manko 2135xpt series window system was developed. The 2135xpt uses polyamide crimped in place structural thermal barriers in lieu of the traditional two-part poured and debridged system. Framing is further thermally enhanced by using strategically placed, non-structural, convection and radiation barriers. This combination allowed for an increase in thermal performance to levels not previously attained in architectural grade sliding windows. The 2135xpt series has been tested to AAMA Architectural Window (AW) standards, and carries NFRC 100, 200, and 500 certification. The 2135xpt series is commonly used in hotels, mixed use, and condominium buildings. If your project is seeking a high performance single sliding window, Manko's 2135xpt can be the perfect fit.



Features:

- ⇒ 3 1/2" overall depth, 1" - 1 1/8" glazing infill
- ⇒ Dual finseal weathering on operating sashes
- ⇒ Preglazed at factory for added quality control
- ⇒ Extruded screen frames with aluminum screen wire
- ⇒ Between glass muntins available
- ⇒ Hermetically sealed integral blinds available
- ⇒ Panning systems & interior snap trims available
- ⇒ Receptor systems available w/optional starter sill
- ⇒ Full range of anodized & AAMA 2605 painted finishes



2135_{xpt} SERIES

PERFORMANCE & CAPABILITIES

AAMA Structural Performance

Type	AAMA Performance Rating	Air Infiltration @ 6.24 psf	Water	Design Pressure	Structural Overload Pressure
Fixed	AW-PG100-F	≤ .1 cfm/ft ²	12.0 psf	100 psf	150 psf
Horizontal Slider	AW-PG50-HS	≤ .3 cfm/ft ²	10.0 psf	50 psf	75 psf

Sizing Capabilities (Frame Size)

Type	Width		Height		Max FT ²
	Min	Max	Min	Max	
Fixed	12"	84"	12"	80"	≤ 38
XO/OX	30"	98"	20"	78"	≤ 30
XOX	36"	98"	20"	78"	≤ 40

NFRC Thermal Performance

COG U-Value	U-Value (NFRC 100)
	Single Slider
0.41	0.47
0.38	0.45
0.35	0.43
0.32	0.41
0.29	0.38
0.26	0.36
0.23	0.34
0.20	0.32

All values shown are calculated with Manko standard TriSeal insulated units. Verify performance numbers with test reports for specific glass make-ups as these are estimates.

Glazing Infill Options

Glazing	1"	1 1/8"
Insulated	S	O*

*Hermetically sealed blinds are available, but will limit glass options and between glass muntins

Hardware Options

Type	Tandem Stainless Steel 3/4" Rollers	Field Adjustable Rollers	Stainless Steel Roller Track Cap	Integral Continuous Pull Handle	Head Mounted Limit Stops	Spring Loaded Automatic Jamb Locks	Single White Bronze Cam Actions Sweet Lock	Dual White Bronze Cam Actions Sweep Lock
XO/OX	S	S	O	S	O	S	O	O
XOX	S	S	O	S	O	S	O	O

S = Standard Hardware

O = Optional Hardware