



# MANKO

## WINDOW SYSTEMS INC.

[www.mankowindows.com](http://www.mankowindows.com)

# 250xpt



your local sales rep  
(608) 825-4838

With energy performance at the forefront of every project design conversation, Manko Window Systems has developed one of its newest curtain wall series, the 250xpt. With its 2 1/2" face profile and polyamide thermal nose, this two sided or fully captured high performance system gives you the versatility to meet any energy code. The 250xpt comes with an option for single pane (250xpt-1), dual pane (250xpt-2), or triple pane (250xpt-3) glazing coupled with a backmember depth ranging from 2 1/2" - 8". Suited well for low to mid-rise applications, the 250xpt is compliant with AAMA air, water, and structural testing and NFRC 100, 200, and 500 certifications. When your project calls for a high performance curtain wall system that is fabrication and installation friendly, look no further, Manko's 250xpt can meet the requirements.

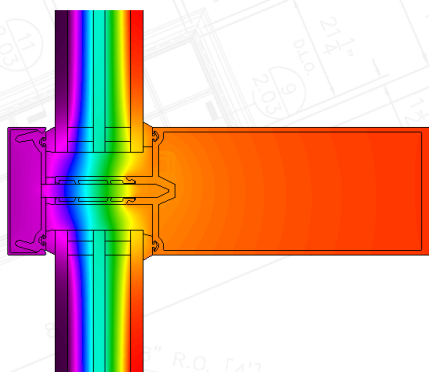
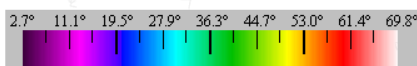
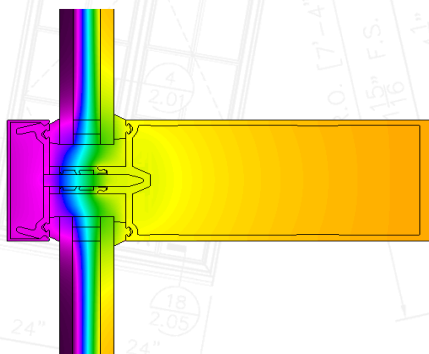
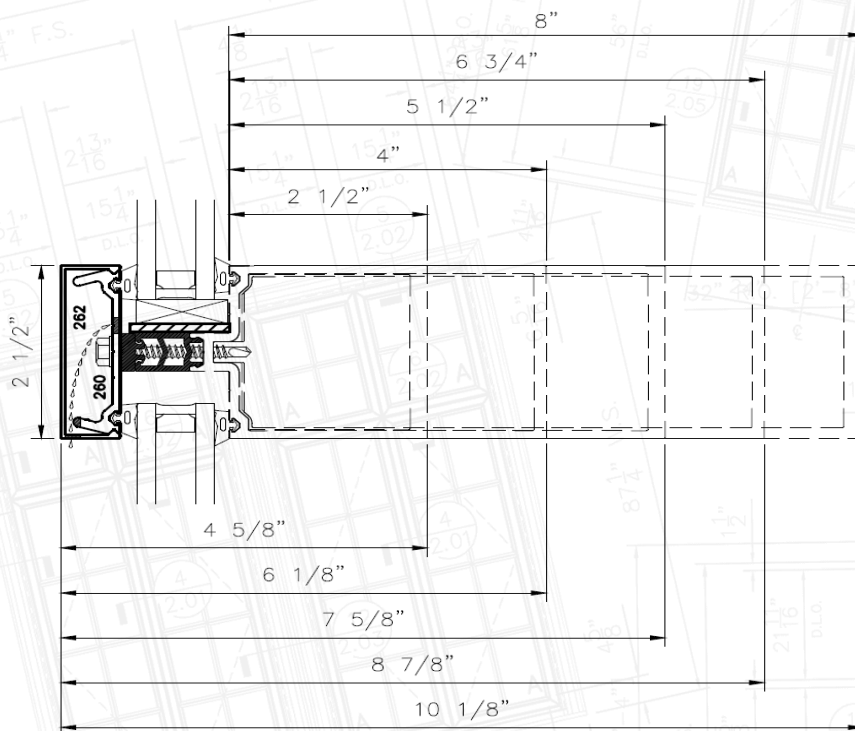


## Features

- ⇒ Multiple face cap & back member depths
- ⇒ .125 (3mm) wall thickness
- ⇒ 3/16" - 1 3/4" glazing cavity
- ⇒ Subframe accommodates storefront doors  
Compatible with Manko's thermal doors
- ⇒ Take-out & hinged sash venetian blinds  
Integral venetian & pleated blind options
- ⇒ Window vent options, including Manko's 1100 series zero sightline window
- ⇒ Full range of anodized & AAMA 2605 painted finishes with dual finish capability
- ⇒ Blast capability

Specify our Products in  
 **specink** BSD

Glass Type	System Performance Values			
	Air U-Value	Argon U-Value	SHGC	CR
Clear SN 68 #2 / Clear	0.34	0.30	0.34	60
Clear SNX 62/27 #2 / Clear	0.33	0.29	0.25	61
Clear SB 60 #2 / Clear	0.33	0.29	0.36	60
Clear SB 70XL #2 / Clear	0.33	0.29	0.25	61
Clear SN 68 #2 / IS-20 #4	0.29	0.26	0.33	51
Clear SNX 62/27 #2 / IS-20 #4	0.28	0.25	0.24	51



17.5mm polyamide thermal strut

## 250xpt-2

## 250xpt-3

35.5mm polyamide thermal strut

### Certified Compliant

- ASTM E 283 – Air
- ASTM E 331 – Water
- ASTM E 330 – Structural
- NFRC 100 – U-Factor
- NFRC 200 – SHGC & VT
- NFRC 500 & AAMA 1503 Condensation Resistance

Glass Type	System Performance Values			
	Air U-Value	Argon U-Value	SHGC	CR
Clear / SN 68 #3 / Clear	0.25	0.22	0.37	71
Clear / SNX 62/27 #3 / Clear	0.24	0.21	0.31	71
Clear / SN 68 #3 / SN 68 #5	0.20	0.17	0.33	77
Clear / SNX 62/27 #3 / SNX 62/27 #5	0.19	0.16	0.27	77
SN 68 #2 / SN 68 #4 / IS-20 #6	0.18	0.16	0.26	68
SNX 62/27 #2 / SNX 62/27 #4 / IS20 #6	0.18	0.15	0.18	69

