



MANKO

WINDOW SYSTEMS INC.
www.mankowindows.com

3135xpt

FIXED ■ SINGLE HUNG

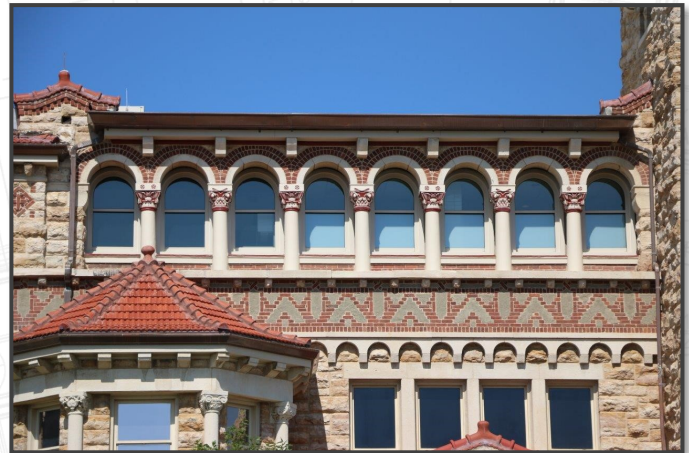


your local sales rep
(608) 825-4838

Traditionally, using a vertically hung operable window system meant that thermal performance was being sacrificed. So it was no surprise when the adoption of stricter commercial energy codes eliminated traditional hung window systems as an option in many climate zones. In response to this, a dramatically more thermally efficient vertically hung window system was needed. The innovative Manko 3135xpt series window system was developed. The 3135xpt uses polyamide crimped in place structural thermal barriers in lieu of the traditional two-part poured and debridged system. Framing is further thermally enhanced by using strategically placed, non-structural, convection and radiation barriers. This combination allowed for an increase in thermal performance to levels not previously attained in architectural grade hung windows. The 3135xpt series is structurally tested as per AAMA Architectural Class (AW) testing, and NFRC 100, 200, and 500 thermal certification. The 3135xpt series is commonly used in residence halls, multi-family, office, and mixed use buildings. If your project is seeking a high performance single hung window, look no further, Manko's 3135xpt can be the perfect fit.

Features:

- ⇒ 3 1/2" overall depth, 1" - 1 1/8" glazing infill
- ⇒ Dual finseal weathering on operating sashes
- ⇒ Preglazed at factory for added quality control
- ⇒ Extruded screen frames with aluminum screen wire
- ⇒ Between glass muntins available
- ⇒ Hermetically sealed integral blinds available
- ⇒ Panning systems & interior snap trims available
- ⇒ Receptor systems available w/optional starter sill
- ⇒ Custom configurations with standard details available
- ⇒ Full range of anodized & AAMA 2605 painted finishes



3135_{xpt} SERIES

PERFORMANCE & CAPABILITIES

AAMA Structural Performance

Type	AAMA Performance Rating	Air Infiltration @ 6.24 psf	Water	Design Pressure	Structural Overload Pressure
Fixed (2135xpt)	AW-PG100-F	≤ .1 cfm/ft ²	12.0 psf	100 psf	150 psf
Single Hung	AW-PG70-H	≤ .3 cfm/ft ²	12.0 psf	70 psf	105 psf

Sizing Capabilities (Frame Size)

Type	Width		Height		Max FT ² with two 1/4" lites	Max FT ² with two 3/16" lites	Max FT ² with two 1/8" lites
	Min	Max	Min	Max			
Fixed (2135xpt)	12"	84"	12"	80"	≤ 38	≤ 38	NA
Single Hung w/spiral balances	20"	60"	26"	98"	≤ 14	≤ 18	≤ 21
Single Hung w/class 5 balances	20"	60"	26"	98"	≤ 40	≤ 42	≤ 42

NFRC Thermal Performance

COG U-Value	U-Value (NFRC 100)
	Single Hung
0.41	0.46
0.38	0.44
0.35	0.42
0.32	0.40
0.29	0.38
0.26	0.36
0.23	0.34
0.20	0.32
All values shown are calculated with Manko standard TriSeal insulated units. Verify performance numbers with test reports for specific glass make-ups as these are estimates.	

Glazing Infill Options

Glazing	1"	1 1/8"
Insulated	S	O*
*Hermetically sealed blinds are available, but will limit glass options and between glass muntins		

Hardware Options

Type	Integral Continuous Pull Handle	Jamb Mounted Limit Stops	Spring Loaded Automatic Sill Locks	Single White Bronze Cam Action Sweep Lock	Dual White Bronze Cam Action Sweet Lock	Heavy Duty Spiral Balances	Class 5 Balances	Removeable Operable Sash
Single Hung	S	O	S	O	O	*S	**O	S
S = Standard Hardware					O = Optional Hardware			
*Sash weight limitations apply					**Standard on sash weight exceeding 45lbs			