



your local sales rep  
(608) 825-4838

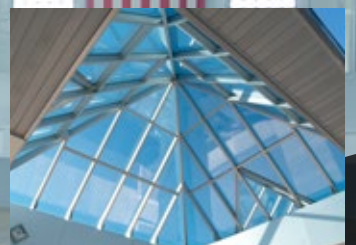


# AUBURN<sup>®</sup>

GLASS & MIXED GLAZED SKYLIGHTS



CREATING ENVIRONMENTS WHERE PEOPLE CAN SHINE<sup>™</sup>



# ABOUT

## MAJOR INDUSTRIES, INC.



### HIGH-PERFORMANCE CUSTOM SKYLIGHTS, CANOPIES & TRANSLUCENT WALL SYSTEMS THAT FIT YOUR NEEDS & BUDGET

With more than three decades of experience, we know that architects, designers and owners are looking for tough, versatile, dependable and cost-effective daylighting systems, and we've created a wide range of solutions to fit every need—all backed by industry-best warranties and an excellent on-time delivery record. Plus we offer:

- A knowledgeable sales team that will help you determine the right solution for the space you're designing
- Structural engineering capabilities to help you conquer the toughest design challenges
- Dependable glass skylight and canopy systems that combine value and high performance
- Custom mixed glazed systems that go far beyond "ordinary"

Your decision to use Major Industries is a sign of trust we take seriously, and we're committed to working with you to create the optimal system for your next project.

#### ON THE COVER:

Main Image: Hartford Armory, Hartford, CT, Fletcher Thompson Architects  
Below Left: South Dakota Children's Museum, Brookings, SD, Architecture Incorporated  
Below Center: Army Reserve Center, Green Bay, WI, RSP Architects Ltd.  
Below Right: Howard County Oncology Center, Kokomo, IN, Vintage Archonics



*Let Major make your daylighting vision a reality...*

888-759-2678 / [www.majorskylights.com](http://www.majorskylights.com)

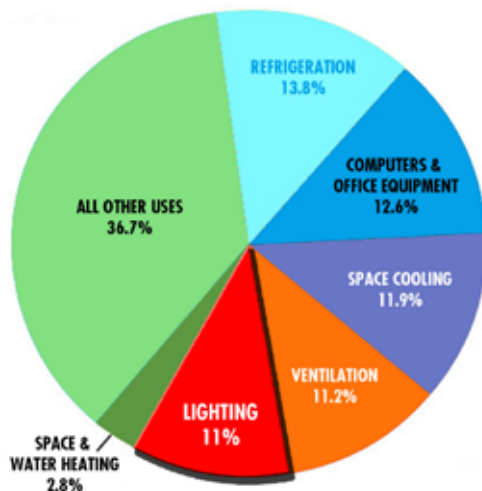
# BENEFITS & BEAUTY OF DAYLIGHTING



C-K Advertising Offices  
Milwaukee, WI  
Kahler Slater Architects

Natural light is a key ingredient in building design, and for good reason. Access to natural light has been shown to increase retail sales and improve worker productivity in manufacturing settings. In education facilities, teachers and staff have long known that access to natural light can improve test scores, long-term retention, and concentration – plus it gives everyone a more comfortable place to work and learn.

U.S. COMMERCIAL BUILDING  
ELECTRICITY CONSUMPTION



Source: US Energy Information Administration,  
Annual Energy Outlook 2017, Table 5, January 2017

Auburn® skylights are a cost-effective green design tool that provides occupants with the beauty and benefits of natural light. By reducing the need for energy-hungry artificial lighting (which can make up more than 10% of a commercial building's overall energy use), skylights can help to optimize energy performance. This is especially important during peak energy use hours when costs are at their highest.

Because of their environmentally-friendly design qualities, including post-consumer and pre-consumer recycled content, Auburn® skylights systems may contribute to LEED® credit categories for both new construction and existing buildings.

For additional information on sustainable design and LEED® opportunities, visit us online at [www.majorskylights.com](http://www.majorskylights.com).

...and give building occupants the natural light they deserve.

888-759-2678 / [www.majorskylights.com](http://www.majorskylights.com)

# AUBURN® ENGINEERED GLASS SKYLIGHTS



Hartford Armory  
Hartford, CT  
Fletcher Thompson Architects

Auburn® custom-engineered skylights give owners the greatest value possible for their dollar. Auburn® skylights aren't designed to span the largest openings; they're optimized for small and medium projects and are engineered to save time, money and weight in your next daylighting project.

Auburn® Engineered skylights feature high-performance sealants, built-in water management, and time-proven EPDM gasketing to provide the ultimate protection: three-level redundancy to keep water out of your building. In addition, they are available in a wide variety of configurations, including mixed glazed systems that incorporate glass with Guardian 275® translucent panels or polycarbonate multi-wall to create a unique, eye-catching and functional design.

- Save money in initial cost and long-term energy expenses
- Possible LEED® credit opportunities for both new construction and existing buildings
- Guaranteed against defective materials and construction for one year from date of purchase (*exclusions may apply*)
- Instant pricing from our SkyPrice™ quote system
- Numerous glazing and finish options available
- Engineered and manufactured using state-of-the-art technology for shorter lead times and correct dimensions
- Our scope includes everything for a successful daylighting project



*Optimized for small to medium sized projects...*

888-759-2678 / [www.majorskylights.com](http://www.majorskylights.com)

Below: Flint Job Corps, Flint, MI, Kessler Associates Architects  
At Right: Army Reserve Center, Green Bay, WI, RSP Architects, Ltd.

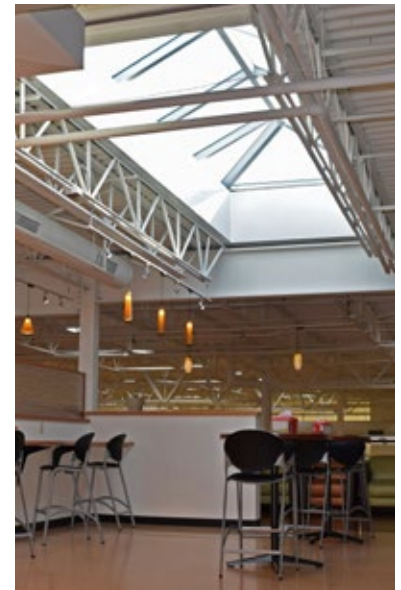


With its wide range of glazing options and features, Auburn® Engineered skylights give owners flexibility and durability in daylighting. Every Auburn® skylight is the product of hundreds of years of combined daylighting expertise, and each skylight is custom built to your specific requirements.

Here are just a few of the many features of an Auburn® skylight:

- Integral screw races are standard, providing superior anchorage and uniform load transfer
- High-performance EPDM gaskets
- Integral guttering on all structural members allows for water and condensation control
- Structural framing members optimized for L/175 or L/240 deflection limits - lowering cost/weight
- Universal "slope adapters" fit all standard rafters, creating precise slope control regardless of product geometry
- Tubular rafters, which frequently eliminate the need for support tubes, are standard and provide a finished appearance
- Standard anodize and Kynar® finish options available, as well as custom color matching
- Unmatched versatility – Major offers mixed glazing systems including glass combined with Guardian 275® translucent panels or polycarbonate multi-wall for sun control and a unique look

From quote and specification, to engineering and beyond, you can be confident that Auburn® is the right choice. We will work with you to create a daylighting system that fits both your needs and budget.



*Integral screw races are standard, providing superior anchorage and uniform load transfer*

*Multiple glazing options available - including mixed glazed options*

*Built-in water management systems, including integral guttering, high-performance sealants and gasketing provide the ultimate protection against the elements*

Above Top:  
Festival Foods, Janesville, WI  
Somerville Architects

Above Lower:  
South Dakota Children's Museum,  
Brookings, SD, Architecture  
Incorporated



*...and designed to go beyond 'standard'.*

888-759-2678 / [www.majorskylights.com](http://www.majorskylights.com)

# AUBURN® E+

## THERMAL PERFORMANCE REDEFINED



PAST Foundation  
Columbus, OH  
WSA Studio  
(Auburn® Engineered Skylight)

While our standard Auburn® Engineered skylight line is perfect for many applications, in those situations where thermal performance is key, consider our Auburn® E+ line of glass skylights. Its newly designed framing system utilized thermal caps and integrated insulation for better performance, and is compatible with a wide range of glass options. It's simple - Auburn® E+ skylights give owners flexibility and durability in daylighting. And keep in mind that every Auburn® skylight is the product of hundreds of years of combined daylighting expertise, custom built to your specific requirements.

- **NEWLY DESIGNED FRAMING SYSTEM** with thermal cap technology provides improved thermal performance & condensation resistance
- **INTEGRATED INSULATION** in the system keeps the cold out
- **FLUSH GLAZED** using structural silicone sealant joints to eliminate water damming while providing a clean, modern look
- **UNLIMITED PITCH CURB CONNECTION FEATURE** that allows for easier installation
- **TESTED** to ASTM E283/330/331 standards to ensure performance
- **COMPATIBLE** with numerous types and sizes of glass for a custom design that's perfect for your specific application - contact us for more details



*Skylights and canopies engineered to be long-lasting...*

888-759-2678 / [www.majorskylights.com](http://www.majorskylights.com)

Below: Saints Anne and Joachim Catholic Church, Fargo, ND, Zerr Berg Architects  
(Auburn® Engineered Skylight)

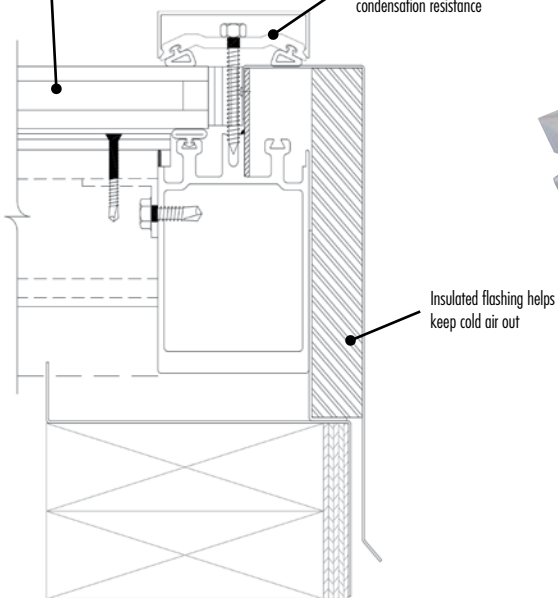


Here are just a few additional features of an Auburn® E+ skylight system:

- Integral screw races are standard, providing superior anchorage and uniform load transfer
- High-performance EPDM gaskets
- Integral guttering for water and condensation control
- Structural framing members optimized for L/175 or L/240 deflection limits - lowering cost and weight
- Unlimited pitch curb connection allows for easier assembly on-site
- Engineered and manufactured using state-of-the-art technology for shorter lead times
- Anodize and Kynar® finish options available
- Mixed glazed systems available including glass plus translucent panels or polycarbonate multi-wall

Available low-e glass and flush glazed design

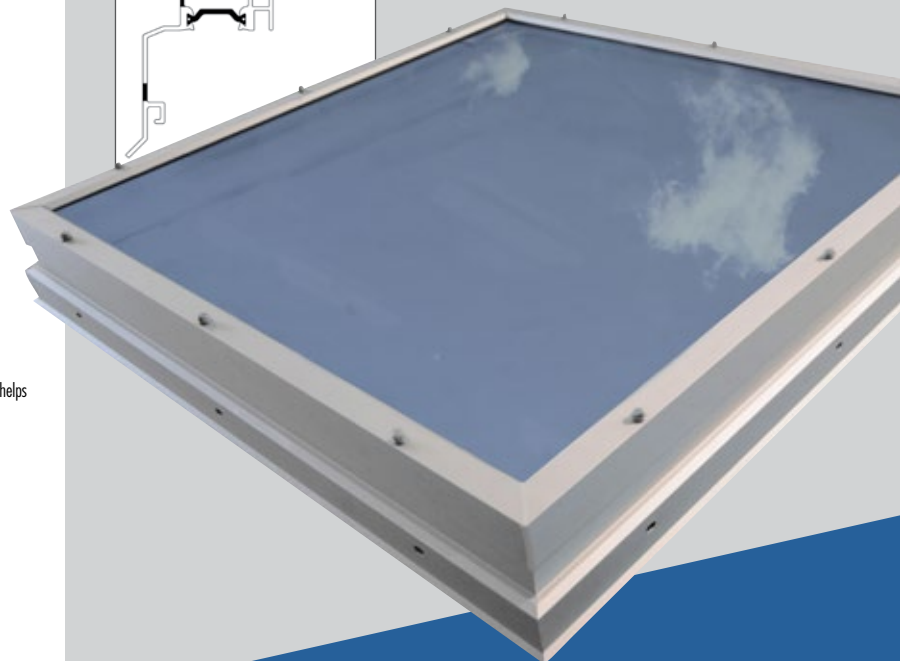
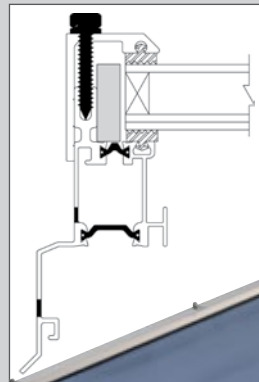
Pultruded fiberglass thermal cap for improved performance and condensation resistance



# AUBURN® QUICK SHIP™ SINGLE SLOPE SKYLIGHTS

For smaller openings and standard sizes, consider our newly updated Auburn® Self-flashing Single Slope skylights, available in sizes up to 25 square feet, with pre-assembled options available for ease of installation and quick lead times. These new single slope skylights feature thermal strut technology in the framing, allowing for a versatile combination of strength and high thermal performance, including improved condensation resistance and U-factors over traditional aluminum framed systems.

- **THERMAL STRUT TECHNOLOGY** provides improved thermal performance & condensation resistance
- **TESTED** to ASTM E283/330/331 standards
- **.27** center of glass U-factor with SHGC of .13-.41 (varies with glazing selection)
- **PRE-ASSEMBLED** options available for quick lead times and simple installation
- **ONLINE ORDERING** for select smaller sizes at [www.shopmajorskylights.com](http://www.shopmajorskylights.com)
- **CUSTOM SIZES** also available by contacting Major at 888-759-2678 or [sales@majorskylights.com](mailto:sales@majorskylights.com)

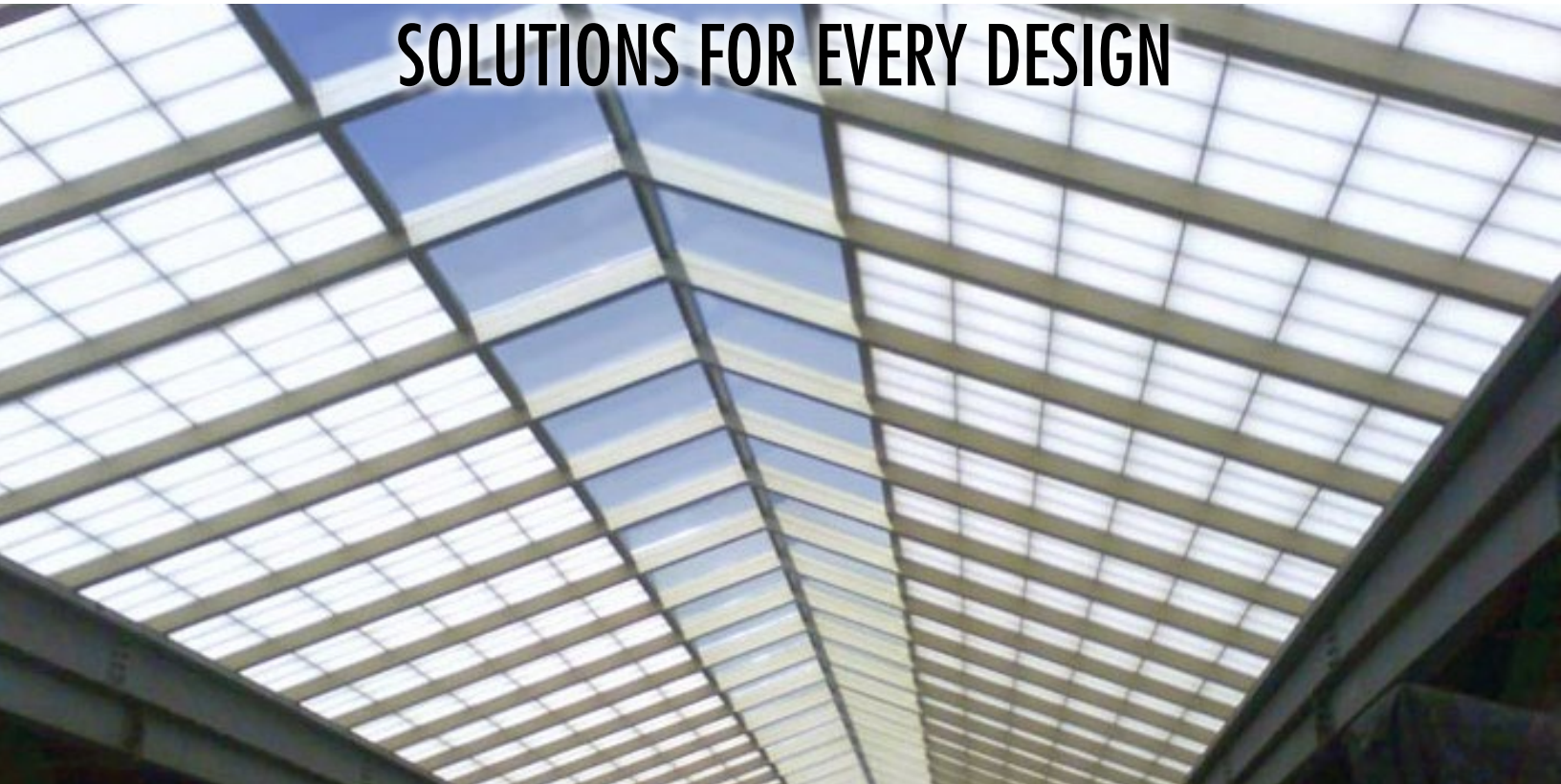


...and provide excellent thermal performance.

888-759-2678 / [www.majorskylights.com](http://www.majorskylights.com)

# MIXED GLAZED SKYLIGHTS

## SOLUTIONS FOR EVERY DESIGN



Gates Chili CSD  
Rochester, NY  
LaBella Associates

Skylights can be utilitarian or incredibly dramatic. They can be the focal point or blend into their surroundings. No matter what their function, skylights offer tremendous benefits to building occupants and the bottom line.

For some applications, translucent panel skylights are a great solution and provide great control over hot-spots and glare while allowing diffuse natural light to fill the space. But when a space demands views to the sky, Major can provide a daylighting solution that's both unique and utilitarian. By combining the sun control properties of translucent panels with glass glazing's inspiring views, you can create a skylight that has optimal functionality and an eye-catching look. Examples of skylight glazing combinations include:

- **USING GLASS ALONG THE CENTER OF A RIDGE** for optimal lighting of an atrium or courtyard
- **UTILIZING GLASS ON THE NORTH-FACING SIDE** of a ridge skylight, allowing for direct light to be diffused while allowing the maximum amount of indirect light into the space
- **ADDING SECTIONS OF POLYCARBONATE MULTI-WALL** to add dramatic color to a skylight, including at the top of a pyramid or in alternating sections of a single slope

No matter what your design demands, Major will work with you to make it a reality.



Auburn® systems feature numerous options...

888-759-2678 / [www.majorskylights.com](http://www.majorskylights.com)



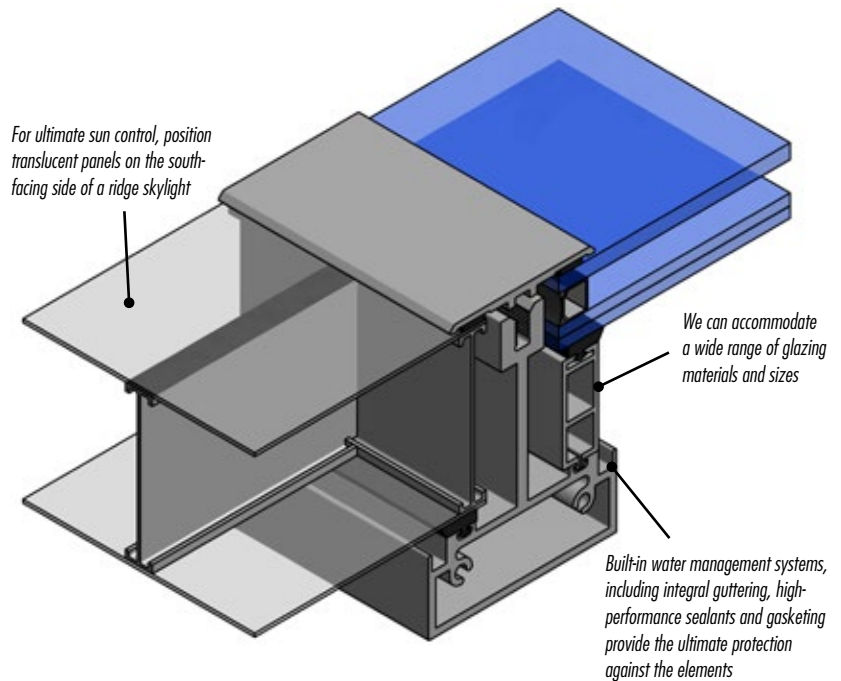
Below: Scaffidi Motors, Stevens Point, WI,  
At Right: Jodo Shinshu Center, Berkeley, CA, Hayashida Architects



Just like our standard Auburn® Engineered skylights, every mixed glazed system is custom designed and built to your specific requirements.

Here are just a few of the many features of an Auburn® mixed glazed skylight:

- Integral screw races are standard, providing superior anchorage and uniform load transfer
- High-performance EPDM gaskets
- Integral guttering on all structural members allows for water and condensation control
- Structural framing members optimized for L/175 or L/240 deflection limits - lowering cost and weight
- Universal "slope adapters" fit all standard rafters, creating precise slope control regardless of product geometry
- Tubular rafters, which frequently eliminate the need for support tubes, are standard and provide a finished look
- Standard anodize and Kynar® finish options available, as well as custom color matching
- Unmatched versatility – combine glass with Guardian 275® translucent panels or polycarbonate multi-wall for sun control and a unique look
- Removable systems, with integrated lifting hooks, are also available



Zemmer Middle School  
Lapeer, MI  
French Associates Architects

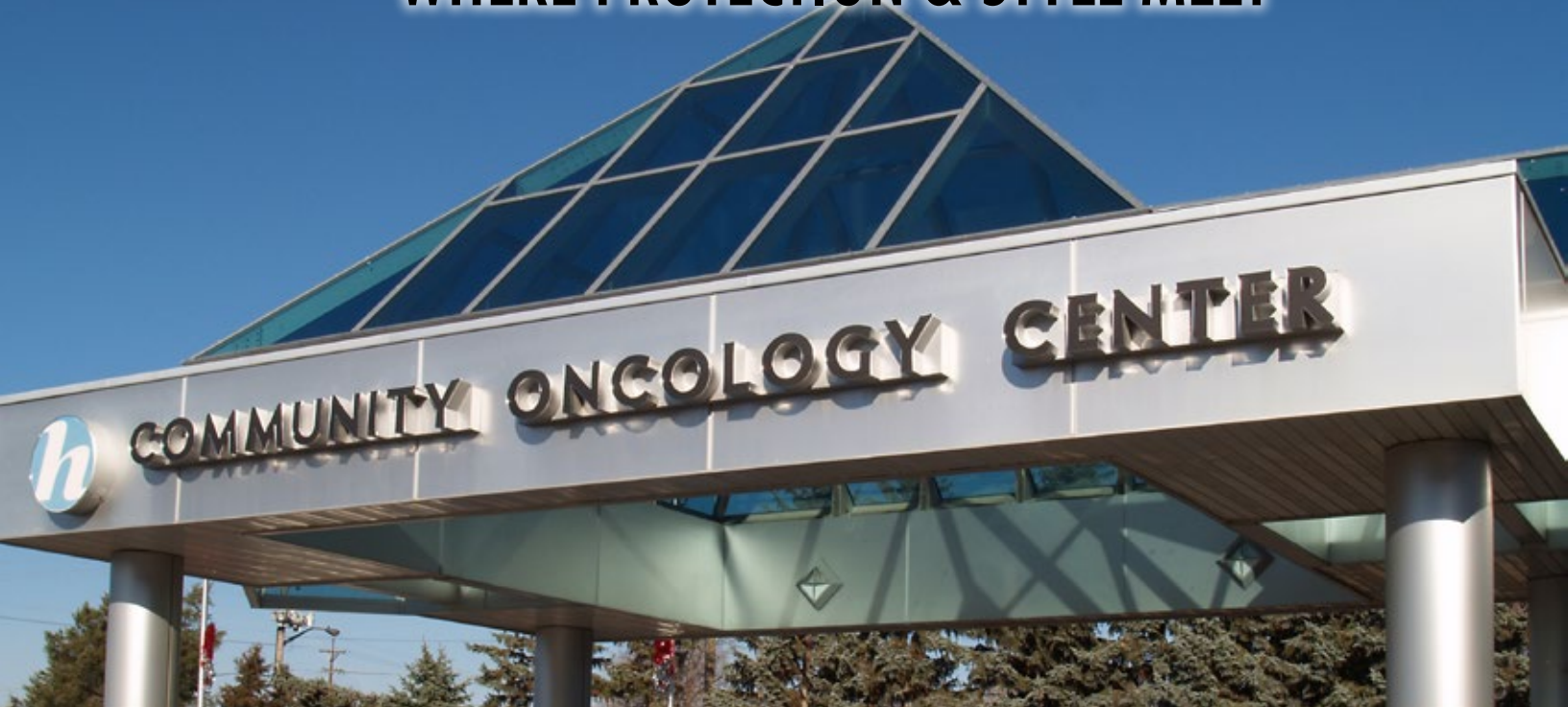
Not sure what the right solution is for your next project? Let us help you create a daylighting system that's perfect for your space.

...making them customizable to your specific needs.

888-759-2678 / [www.majorskylights.com](http://www.majorskylights.com)

# CANOPIES & AWNINGS

## WHERE PROTECTION & STYLE MEET

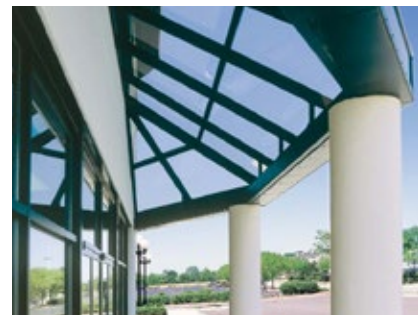


Howard County Oncology Center  
Kokomo, IN  
Vintage Archonics

### DO MORE THAN SHIELD OCCUPANTS AND VISITORS FROM THE ELEMENTS

Major Industries prides itself on creating long-lasting, field-tested products that are both beautiful and functional. Our Auburn® systems offer unique and eye-catching canopy options while also protecting occupants from both inclement weather. Below are just a few examples of how Major's systems can be incorporated into a building's design, and their benefits compared to traditional opaque canopies and awnings.

- **ENTRANCES:** Welcome customers and protect them from the elements with an outdoor canopy or "pass-through" skylight that leads visitors into indoor spaces. Our Auburn® systems can provide an attention-grabbing design element to signify an entryway, or can be incorporated into your building's signage.
- **EXTERIOR COURTYARDS & GATHERING AREAS:** Outdoor common use areas are more welcoming when they're protected from the elements. Auburn® systems offer strong protection against the elements while allowing natural light to penetrate the space.
- **ELEVATED WALKWAYS & HIGH TRAFFIC AREAS:** Natural light has been shown to improve people's moods, and Major offers a wide selection of systems that allow for tremendous design flexibility. Energy savings can also be substantial when daylighting a large area, significantly reducing the need for energy-hungry artificial lighting during daylight hours.



Retail Store Entryway  
Stevens Point, WI  
Grunwald and Associates Architects



Welcome building occupants into your space...

888-759-2678 / [www.majorskylights.com](http://www.majorskylights.com)

# SPECIALTY CONFIGURATIONS

Find the Perfect Fit for Your Project



## Removable Skylights

Auburn® skylights can be configured with lifting hooks for drop-on installation or future building access (available in stainless steel for long-term durability). Mixed glazed packages can also be designed to combine energy efficient translucent panels with a removable top section using clear or colored glazing panels. Typical applications include MRI centers, water treatment plants and daylighting over large machinery or similar areas that are difficult to access via conventional means.



## Custom Color Matching

We know that a skylight can be a key design feature in a space, and sometimes that requires a little something “extra”. If you’re looking to match your skylight’s finish color to an existing building color, school color or logo, we’ll work with you to custom match your finish. Our Kynar® finish options will also ensure long-lasting performance that can stand up to just about any environment.

Contact Major today for more details on these and other custom design options. We’ll work with you to find the right daylighting solution for your next project.

# PERFORMANCE INFO & TESTING OVERVIEW

## Test Standards & Methods

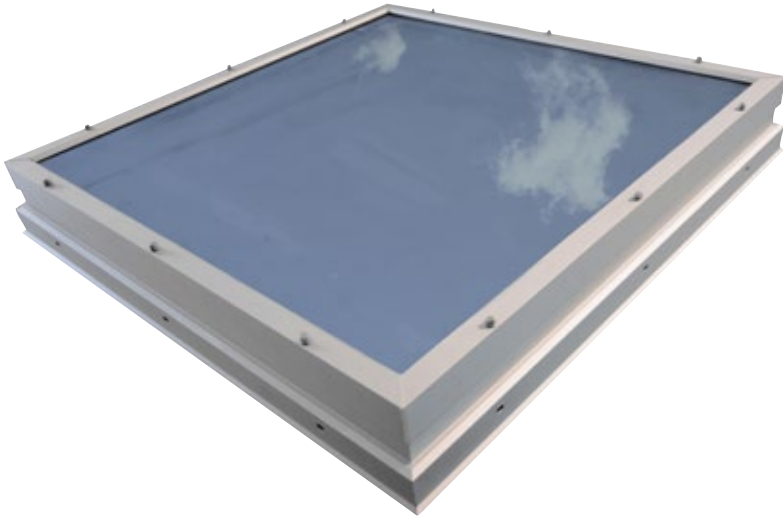
Our custom engineered skylights are designed to meet or exceed all applicable building codes and structural requirements and have the following minimum performance attributes\*:

- Framework: All extruded aluminum shall be of the alloy 6063-T5 or 6063-T6.
- Glazing Strips: Extruded 70± durometer EPDM material per ASTM C864.
- Setting Blocks: Extruded EPDM rubber formulated Type A 80± durometer per ASTM D2240.
- Fasteners: For exterior cap retainers: ASTM A193B8 300 series stainless steel screws. Framework: ASTM B211 2024-T4 aluminum rivets, as required by connection.
- Flashing: Standard flashing will be 5005-H34 or equivalent with a minimum thickness of .040.
- Finish Options: Anodized Coatings - Architectural Class I clear anodized Type AA-M10C22 A41, Architectural Class II clear anodized type AA-M10C22-A31, Architectural Class I pigmented anodized Type AA-M10C22 A42/A44, Pigmented Organic Coatings: AAMA 2604, High Performance Pigmented Organic Coatings: AAMA 2605.
- Air Infiltration: ASTM E 283: Not to exceed 0.05 cfm/sq ft at a static pressure of 6.24 psf (50 mph)/AAMA/WDMA 1600/I.S. 7, SKG-HC40: Not to exceed 0.10 cfm/sq ft at a static pressure of 6.24 psf (50 mph).
- Static Water Penetration: ASTM E 331: No uncontrolled water leakage at a static pressure of 12 psf (69.3 mph) and a minimum water flow rate of 5 gal/hr/sq ft for 15 minutes. AAMA/WDMA 1600/I.S. 7, SKG-HC40: No uncontrolled water leakage at a static pressure of 6 psf and a minimum water flow rate of 5 gal/hr/sq ft for 15 minutes.
- Structural Load Test: ASTM E 330: Maximum allowable deflection of any member shall not exceed L/175. AAMA/WDMA 1600/I.S. 7, SKG-HC40: Permanent set of any frame member shall not exceed 0.4 percent of its unsupported span at 60 psf positive and negative test pressures.
- Field Test: For dynamic water resistance, static pressure of 12 psf (AAMA 501.2-94). No uncontrolled water leakage.

\*Test standards and results may vary with product type, and are subject to change with periodic procedure changes and product updates. Contact Major for the latest test data and product information.

... with an eye-catching canopy or awning!

888-759-2678 / [www.major skylights.com](http://www.major skylights.com)



# AUBURN® QUICK SHIP™ SKYLIGHTS - READY WHEN YOU NEED THEM

- Pricing within 1 business day
- 50% shorter lead times on standard size and finish options
- Pyramid sizes between 4' and 10'
- Pyramid slope dimensions of 18.5°, 26.5° and 30°
- Single slope dimensions of 4' and 5' upslope and widths of 4' to 12'
- Standard finishes: Bone White 50% Kynar®, Dark Bronze Anodize, and Clear Anodize
- Ready-to-install option available
- **SELECT SIZES AND OPTIONS AVAILABLE FOR ONLINE ORDERING @ [SHOPMAJORSKYLIGHTS.COM](http://SHOPMAJORSKYLIGHTS.COM)**

Army Reserve Center, Green Bay, WI, RSP Architects, Ltd.



## FAST ONLINE QUOTE REQUESTS

Visit [majorskylights.com](http://majorskylights.com), click on the "quote" tab towards the top of the page, choose your options and complete the electronic form. It's just that quick and easy!



Major Industries provides nationwide continuing education to Architects with its training sessions. Contact us today to find out more!

*Major Industries, Inc. reserves the right to improve products without notice as the result of ongoing R&D and/or third-party compliance.*



SKYLIGHTS, CANOPIES & TRANSLUCENT WALL SYSTEMS

**MAJORSKYLIGHTS.COM**

7120 STEWART AVE, WAUSAU, WI. 54401

SALES@MAJORSKYLIGHTS.COM / 888-759-2678 / 715-842-4616

