

# NUDO®

YOUR VISION IS OUR MISSION™



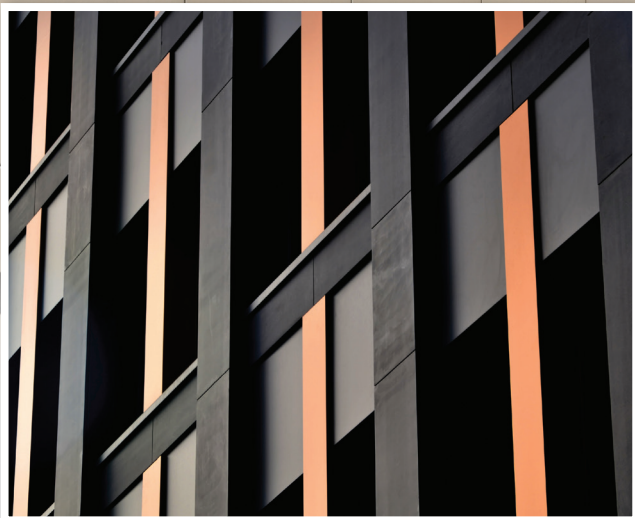
## EnduroBond®

---

Aluminum Composite Building Envelope Panels – Without Limitations

ACM COMPOSITE PANELS  
EXTERIOR - INTERIOR - CORPORATE IMAGING





# EnduroBond®

Nudo Products began manufacturing ACM (Aluminum Composite Panels) in 1999. Over the past 15 years, our panels have been used on a wide variety of buildings and storefronts for exterior cladding applications and signage.

## THE ENDUROBOND ACM PANEL IS AVAILABLE IN ALMOST ANY:

- **Color**  
Kynar  
Custom color panels available
- **Quantity**  
No job too large or too small
- **Thickness**  
3mm, 4mm, and 6mm available
- **Size**  
Standard 50" and 62" wide, 196" long  
Custom sizes also available
- **Core**  
PE or fire-rated
- **Pre-routed panels are also available**

---

*EnduroBond did not ignite when tested for flame and smoke spread in the ASTM E-84 Test. There was no flame present with the test burn applied for a full ten minutes, resulting in a Class "A" panel rating. EnduroBond also provides excellent impact and wind resistance when tested to ASTM 72 standards.*

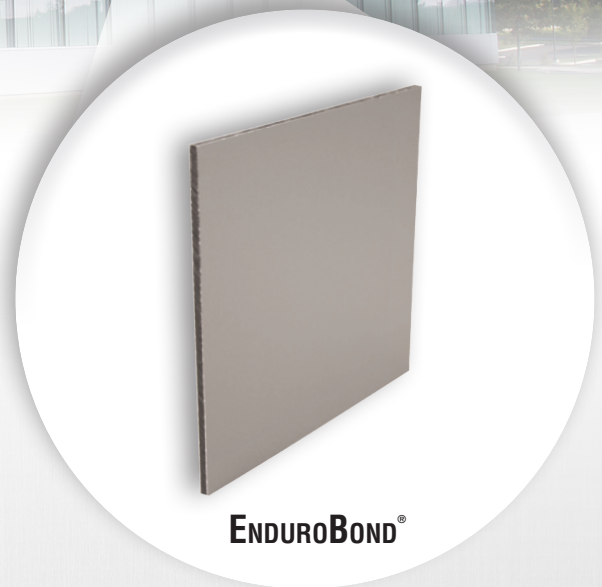
*All EnduroBond test data can be found on the complete Product Data Sheet at [www.Nudo.com](http://www.Nudo.com)*





## **NUDO OFFERS A FULL ARRAY OF ACM EXTERIOR CLADDING AND INTERIOR DECORATIVE PANELS.**

- **Nudo EnduroBond** – U.S. tested quality, tremendous value and exceptional availability
- ACM panels available from a variety of other manufacturers
- Flat sheet and pre routed panels
- Standard (PE) or fire-rated (FR) core panels
- Standard Kynar colors and custom colors
- From small repair jobs to complete building envelopes – Nudo provides solutions!



**In addition to high quality panels, Nudo also offers fabrication. Panels can be ordered routed to size.**

**Need a specified panel like Alpolic®, Reynobond® or Alucobond®? Nudo can provide flat sheet to fully fabricated with hardware and installation instructions.**

**Contact us at 800-826-4132 for more details.**

*Alpolic is a Trademark of Mitsubishi; Reynobond is a Trademark of Alcoa; Alucobond is a Trademark of 3A Composites.*

# IT'S ABOUT YOU

At Nudo, it's more about you than us. We are customer-focused and that means you can expect the responsiveness, consistency and solutions you need.

## Responsiveness

- With over 60 years of experience, we understand the demands and expectations of the building, architecture, transportation and sign industries.
- Our goal is to make things easy for you, and that means a simple ordering process, fast turn times and our own transportation network that allows us to provide industry leading, on-time delivery on a dedicated truck.
- Our customer satisfaction score is the highest in our industry and a true testament to our understanding that you need answers quickly.



## Consistency

- With an on-time delivery rate of 99% and a return rate of less than 0.2%, we stand behind our products and stand firm on 100% customer satisfaction - period!
- We are rated as having the best service in the industry by an independent assessment.
- We know trust is earned and can never be taken for granted. From the first order and every subsequent one after that, you can depend on us to deliver the right product at the right price at the right time.

## Solutions

- We know that one size doesn't fit all. We address the variables that are inevitably present in any project and use our knowledge to provide you with product options that best suit your needs.
- Couple our wide variety of inner layer options, surface materials, substrates, thicknesses, sizes and colors with our specialized manufacturing equipment and extensive stocking level of raw materials and we can provide custom solutions for just about any panel need.



your local sales rep  
(608) 825-4838

Visit [www.Nudo.com](http://www.Nudo.com) or  
contact our local dealer for details.

1500 Taylor Avenue  
Springfield, IL 62703  
[www.Nudo.com](http://www.Nudo.com)

Ph: 800.826.4132  
Fax: 217.528.8722