



your local sales rep
(608) 825-4838

HIGH PERFORMANCE PRODUCTS

For The Glazing Industry!

801 Cedar Cross Road | Dubuque, IA | 52003



Keyed Removable Mullions



Keyed Removable Mullion for Aluminum Doors



Standard aluminum pairs of doors leak air and water.



Traditional removable mullions are unsightly and do not fix air and water infiltration.

Introducing... Greenfield Products Keyed Removable Mullion



Unlike any other, our removable mullion provides optimal efficiency by creating an element barrier all around the door. The Greenfield Products Removable Mullion blends with the door frame to create the most visually appealing mullion available. Coming soon in thermally improved.



Clean. Simple. Effective.

Having the **mullion tube** positioned between the single doors eliminate air flow while serving as an element barrier.



The **latch plate** affixed to the door frame retains the mullion top.



The **base plate** is attached within the thresholds to accept the mullion tube bottom.



The locking mechanism is housed within the mullion cavity to shield it from debris and unauthorized tampering



*Works with all major commercial storefront systems.
Available in 1 3/4" and 2" by 84" and 96".
Custom colors are available*

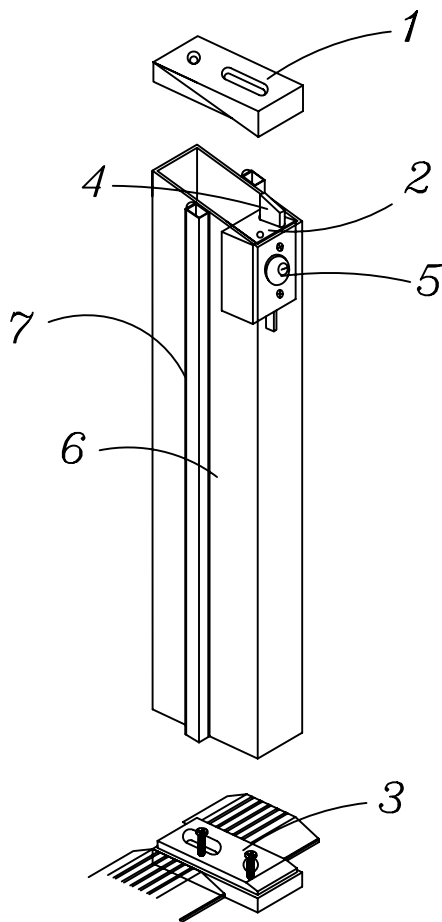


Part Number	Color	Description	List price	Removable Mullions
184S	DU/AL	1 ¾ X 4 ½ X 84 SMOOTH TUBE WITH SCREW APPLIED STOP		
184F	DU/AL	1 ¾ X 4 ½ X 84 DOUBLE FIN TUBE		
196S	DU/AL	1 ¾ X 4 ½ X 96 SMOOTH TUBE WITH SCREW APPLIED STOP		
196F	DU/AL	1 ¾ X 4 ½ X 96 DOUBLE FIN TUBE		
284S	DU/AL	2 X 4 ½ X 84 SMOOTH TUBE WITH SCREW APPLIED STOP		
284F	DU/AL	2 X 4 ½ X 84 DOUBLE FIN TUBE		
296S	DU/AL	2 X 4 ½ X 96 SMOOTH TUBE WITH SCREW APPLIED STOP		
296F	DU/AL	2 X 4 ½ X 96 DOUBLE FIN TUBE		
296ST	DU/AL	2 X 4 ½ X 96 THERMALLY ISOLATED SMOOTH TUBE WITH SCREW APPLIED STOP		
2596ST	DU/AL	2 ¼ X 4 ½ X 96 THERMALLY ISOLATED SMOOTH TUBE WITH SCREW APPLIED STOP		

Installation Instructions

284S and 296S ALUMINUM DOOR KEYED REMOVABLE
MULLION FOR 1 3/4" DOORS

Standard Mullion Dimension 2" x 4 1/2"
Opening Dimension 84" or 96"

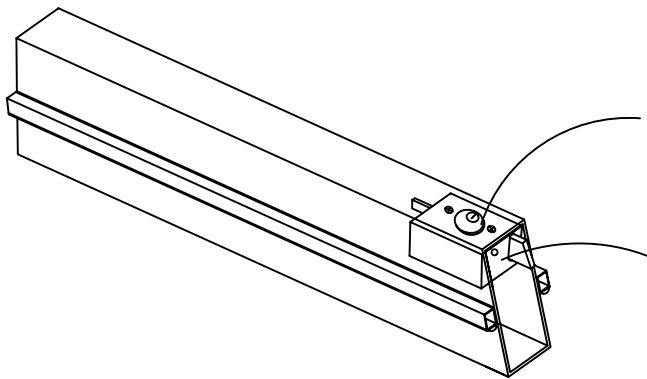


1. Top mount latch plate
2. Lock Mechanism
3. Base Plate
4. Strike
5. Standard long body Mortise Cylinder with C-4 tang
NOT INCLUDED
6. Mullion tube
7. Screw applied Weather stripping

Read all instructions and Warnings
Before starting installation!

These installation instructions present a step-by-step sequence for installation. Please read them carefully before beginning installation.

Step 1 CYLINDER INSTALLATION



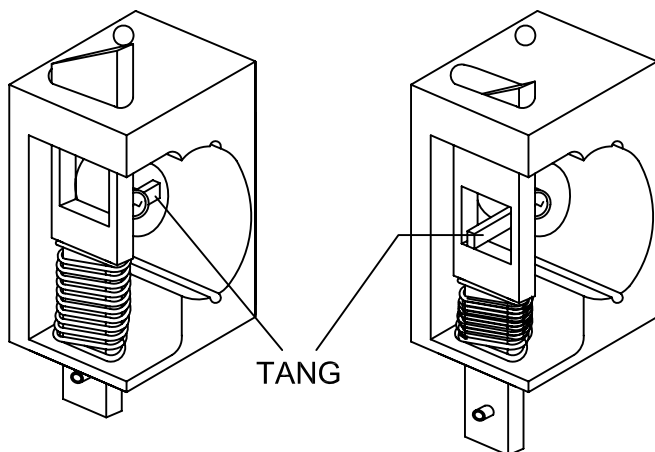
Thread the cylinder into the Lock with keyway centered on strike side of tube. Cylinder must be oriented as shown.

When cylinder is in position tighten set screw to secure the cylinder.

Test strike function
Turning the key counter clock wise the strike should retract.

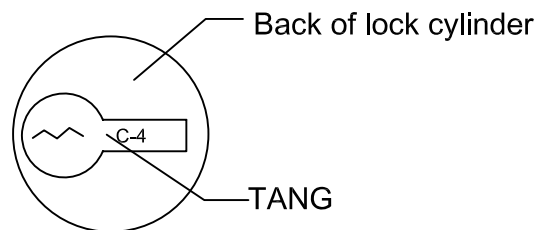
The key should only turn approximately 1/2 of a turn to function if it turns further check cylinder position and or cylinder tang.

LOCK MECHANISM

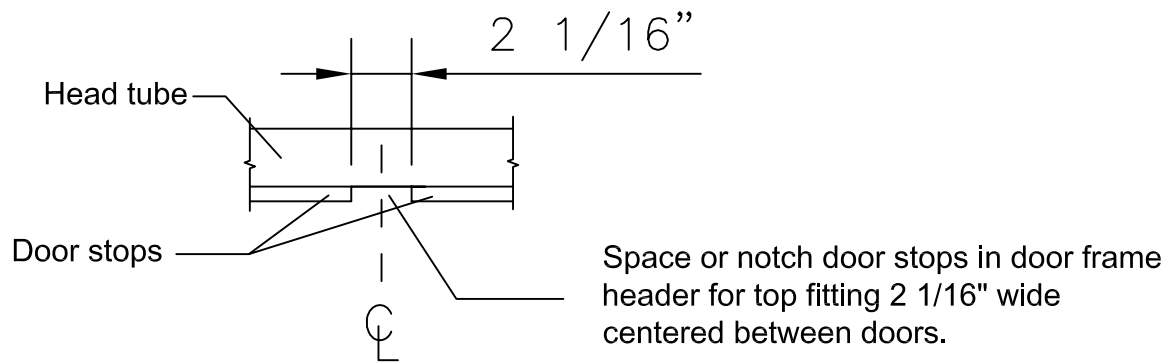


Locked position

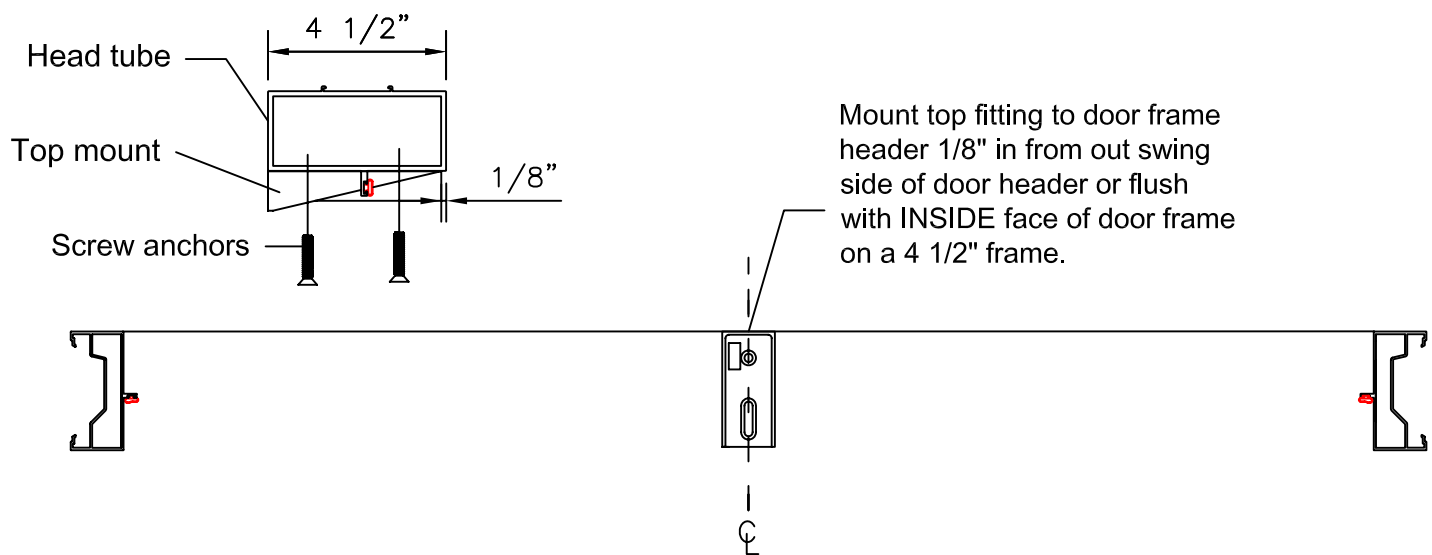
Unlocked position



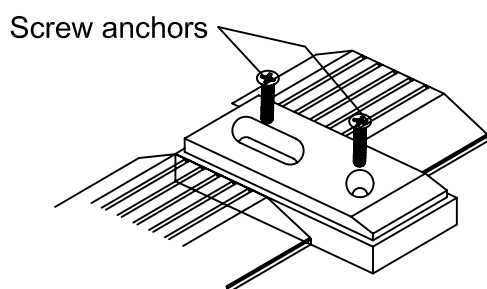
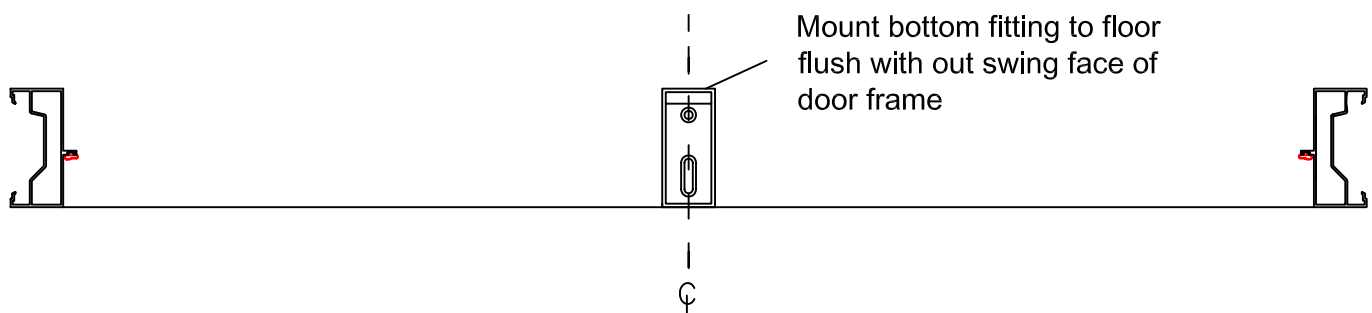
Step 2 HEADER PREP



Step 3 TOP FITTING MOUNT



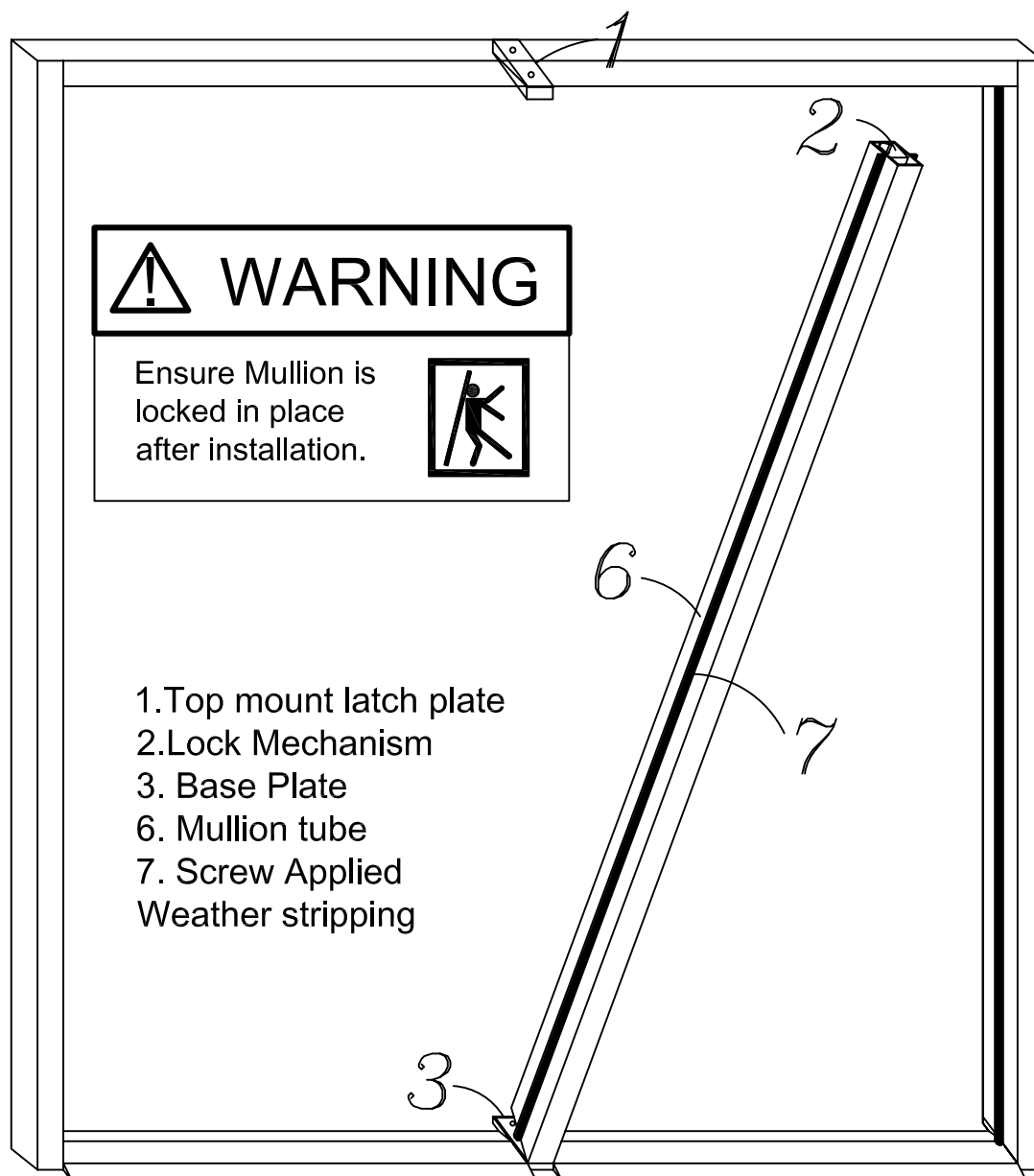
Step 4 BOTTOM FITTING MOUNT



Dimension from ground to under side of header to be 84" if it is more than this shim bottom mount accordingly

Step 5 MULLION INSTALLATION

From the OUTSIDE place the tube on the BOTTOM MOUNT with the lock cylinder facing in and turn the key so as to lower the strike. Snap the tube into the TOP MOUNT and release the key. Ensure the mullion is locked into place by wiggling it.



NOTE: If the opening is smaller than 84" cut bottom of tube only by subtracting the new size of opening height from 84"

Example: Opening height of 83 1/2" (84" - 83 1/2"= 1/2")
cut 1/2" from *BOTTOM* of tube.